

## EMELIA DRESSER TOPPER

---



### **WARNING:**

**FALL HAZARD** - To prevent death or serious injury from falls, always keep child within arm's reach. **NEVER LEAVE CHILD UNATTENDED** and always use restraining system.

This changing table is intended for use with children weighing up to 50 pounds. Emelia dresser topper will be used with Emelia dresser ( sold separately) with size 42"W x 18"D x 36"H. Cushion pad size is 32"L x 16"W x 4"H.

Do not use the Emelia Dresser if it is damaged or broken.

**Customer Service-** If you are missing parts or have any questions about this product, please contact us at : 1-800-762-1751

### **IMPORTANT SAFETY INSTRUCTIONS:**

Please read all instructions before use of the Dresser.

For your safety, assembly by two or more adults is recommended.

Keep instructions for future use.

### **PRE-ASSEMBLY:**

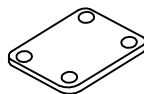
- The illustrations provided allow for easier assembly when used in conjunction with the assembly instructions.
- Remove all parts and hardware from the box and lay out on a carpeted or scratch-free work surface. The shipping box provides an ideal work surface. Do not dispose of any contents until assembly is completed to avoid accidentally discarding small parts or hardware.
- Use the parts on the hardware list to identify and separate each of the pieces included prior to starting assembly.
- Note: **DO** not fully tighten the screws until all parts are in place. Failure to follow these instructions may cause the screws to misalign during assembly.
- If using power tools to aid in assembly please use caution. Power tools can damage hardware or split wood.

### **PARTS INCLUDED:**

A [1] Dresser Topper

### **HARDWARE INCLUDED:**

B [2] Metal bracket

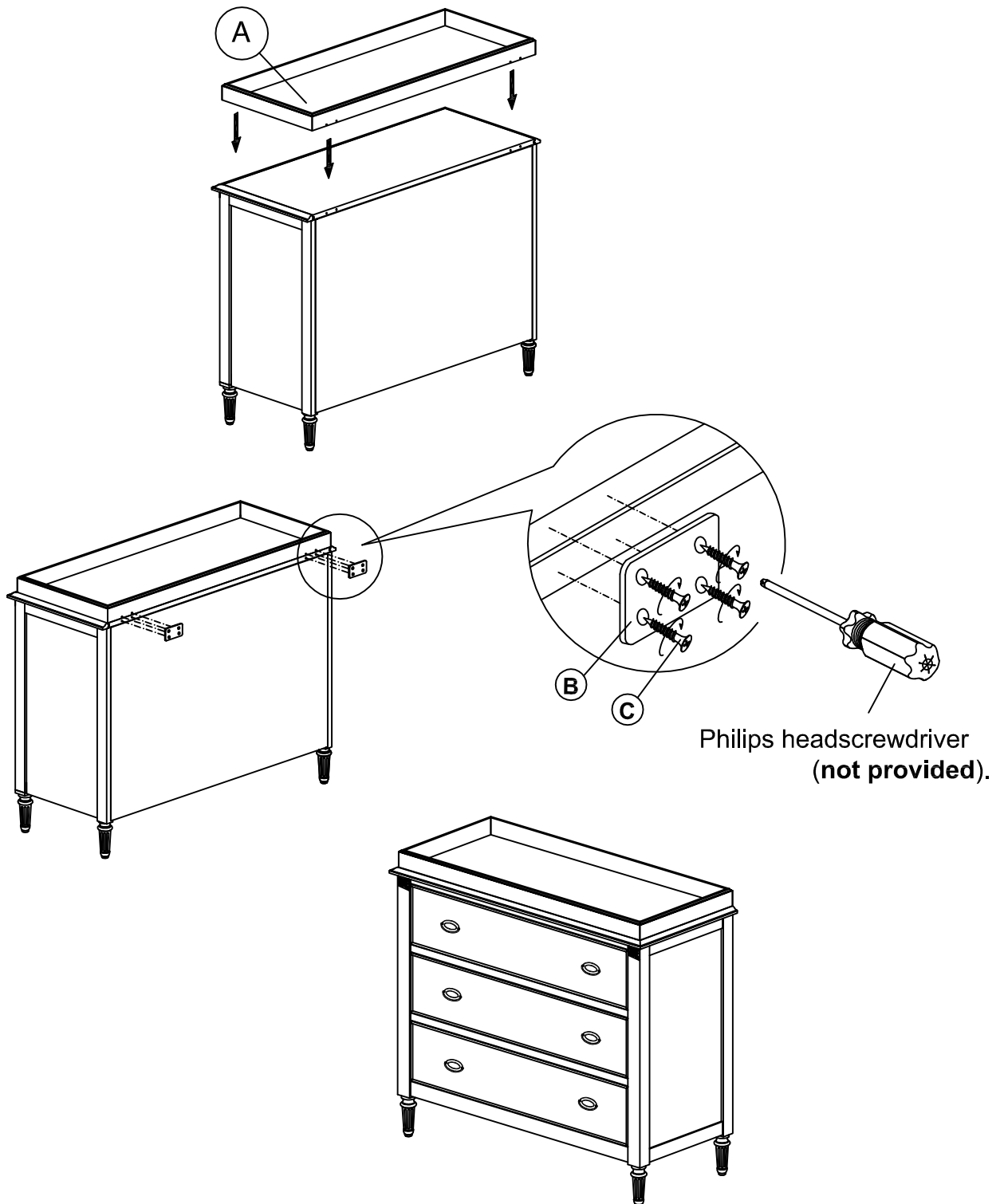


C [8] Wood screw 6x15mm



## ASSEMBLY INSTRUCTIONS:

To connect EMELIA Topper (A) to EMELIA Dresser, place (2) Metal Brackets (B) over the pre-drilled holes on back of Topper and secure it to Dresser with [8] Wood Screws (C).



## CARE INSTRUCTIONS:

- Dust often using a clean, soft, dry lint-free cloth. Blot spills immediately, and wipe with a clean, damp, cloth. We do not recommend the use of chemical cleansers, abrasives, or furniture polish on our lacquered finish.

*Thank you for your purchase*  
[www.rhbabyandchild.com](http://www.rhbabyandchild.com)