

## TRIBECA STORAGE DESK

### PARTS INCLUDED:

A [1] TOP PANEL





B [2] DRAWER STORAGE BOX

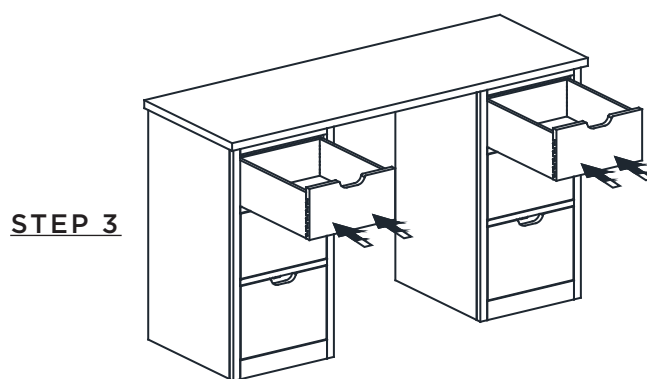
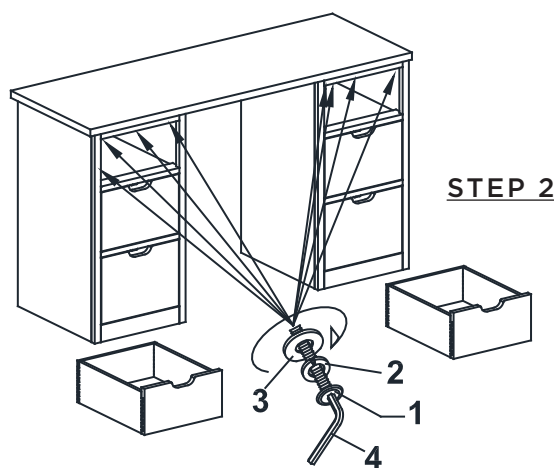
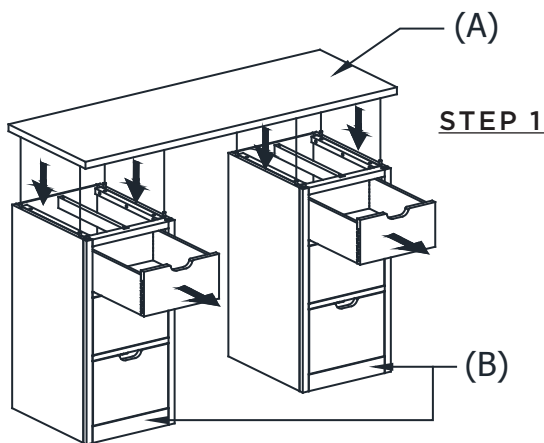
### ASSEMBLY INSTRUCTIONS:

**STEP 1:** Remove top drawers by pulling them out of the Drawer Storage Box (B). Place the Top Panel (A) on top of the Drawer Storage Box (B).

**STEP 2:** Insert Flat Washer (1), Spring Washer (2), Bolt (3) and tighten with Allen Key (4).

**STEP 3:** Place the drawers back into the Drawer Box (B), as shown in illustration below.

NO.	ITEM	DESCRIPTION	QTY.
1		5/16" Flat Washer	8 pcs.
2		5/16" Spring Washer	8 pcs.
3		5/16" x 1-1/2" Bolt	8 pcs.
4		4mm Allen Key	1 pc.



### CARE INSTRUCTIONS

1. Dust often using a clean, soft, dry lint-free cloth.
2. Blot spills immediately, and wipe with a clean, damp cloth.
3. We do not recommend the use of chemical cleansers, abrasives, or furniture polish on our lacquered finish.

### IMPORTANT SAFETY INSTRUCTIONS

Never sit on, stand on, or otherwise apply heavy pressure to top.